



Many Hands. One Faith.

The Second Sunday In Ordinary Time

January 18, 2009

Gospel Reflection

YOUR SERVANT IS LISTENING

In today's first reading, Samuel hears the Lord's voice, but mistakes it for Eli's. Fortunately, Eli is familiar enough with the ways of the Lord to help Samuel make his response.

As we seek the Lord, it is good to have someone like Eli who is familiar with the Lord's voice. There are many voices that bid us "Follow this way," and the Lord's call is not always easy to discern. There are people, too, who would pretend to know the Lord and draw others to themselves rather than to God.

Eli could have taken advantage of Samuel's naïveté and claimed it was he who had summoned Samuel. But Eli claims neither to be God nor to speak for God. Instead, he encourages Samuel to listen for himself.

WHAT ARE YOU LOOKING FOR?

Perhaps the most profound line in all of today's readings is Jesus' question of the two disciples who begin to follow him. "What are you looking for?" he asks plainly and directly.

Finding the Messiah was partly a matter of what one was looking for. If one lived with the expectation of the Messiah's coming, there would be a certain alertness, a certain watchfulness to life, and a certain openness to God's movements. The two disciples had followed John the Baptizer, but as soon as John pointed to Jesus, they were

ready to follow him.

It has been said that what we find in life is pretty much what we have sought.

"What are you looking for?" is a challenging ques-

tion for each of us to ask of ourselves. Our honest answer to this question can reveal much about our faith and our values. Those who, like Andrew and the other disciple, are looking for the Messiah will find the Messiah, dwelling now, as then, among the people. "Come and see!"

Today's Readings: 1 Samuel 3:3b-10, 19; Psalm 40:2, 4, 7-10; 1 Corinthians 6:13c-15a, 17-20; John 1:35-42

Copyright © 2005, World Library Publications. All rights reserved.



Mass Intentions for January 25, 2009

5:30 p.m.	OLMC	All Of Our Parishioners
8:30 a.m.	OLMC	Special Intentions Of The McDonogh & Waller Families
10:30 a.m.	STM	Ignatius Nguyen, Joseph N. Dinh, Helen Cecil, All Of Our Parishioners
12:30 p.m.	STM	Dean Driskell

Daily Readings

01/17 Sat	8:15 am Heb 4:12-16 Mark 2:13-17 All The Sick And Homebound Of OLMC
Sun Vigil	5:30 pm 1 Samuel 3:3b-19 1 Cor 6:13c-20 John 1:35-42
01/18 Sun	8:30 am 1 Samuel 3:3b-19 1 Cor 6:13c-20 John 1:35-42
	10:30 am 1 Samuel 3:3b-19 1 Cor 6:13c-20 John 1:35-42
	12:30 pm 1 Samuel 3:3b-19 1 Cor 6:13c-20 John 1:35-42
01/19 Mon	8:15 am Heb 5:1-10 Mark 2:18-22 Jim Snider
01/20 Tue	8:15 am Heb 6:10-20 Mark 2:23-28 Ed Mader
01/21 Wed	8:15 am Heb 7:1-3,15-17 Mark 3:1-6 Joseph W. Allen
01/22 Thr	8:15 am Heb 7:25-8:6 Mark 3:7-12 Rose Markert
01/23 Fri	8:15 am Heb 8:6-13 Mark 3:13-19 Chris Logsdon & All Military Personnel
01/24 Sat	8:15 am Heb 9:2-3,11-14 Mark 3:20-21 Bernice Stone

Intentions



Weekly Message
By: Fr. Philip Erickson

Last week I reflected on the Christian vocation, or calling, which is to love others as Christ has loved us. In that context, we considered the single life, married life, religious life and holy orders.

Our decision to answer Christ's call is truly a fundamental decision. Like the disciples, we are called to leave everything behind and follow Christ. As scripture reports, the disciples did not always fully grasp what answering that call would demand of them. Like them, our response often entails a life-time of ever-deepening commitment.

However, this commitment to love with the love of Christ is not simply nice theological language. It rooted in very practical terms. Our lives and abilities are fundamentally a gift from God. In turn we are called to use these in the service of the Gospel. We are called to be like the industrious servants who invested what their master gave them, so that when he returns we might show the results that we produced (c.f., Matthew 25: 14-30).

For example, if you have the ability to paint, then you are invited to use that gift in the service of the Gospel. You might paint a mural at a nursing home or hospital. You might paint cards so that they can be sent to shut-ins. In this manner, you take the gif that God has given to you, and you return that gift through loving service.

This symbolically occurs at the Mass every Sunday. We present bread and wine. We take God's gifts (wheat and grapes), and we give back to God (bread and wine, God's gift that have been shaped by human hands) in thanksgiving. Those gifts are symbols of our lives. God has given us life and so many good things. In thanksgiving, we offer ourselves through loving service back to God.

The hard part is beginning to truly appreciate the blessings you have already received....

FATHER Philip

Pope Benedict XVI Prayer Intentions
January 2009

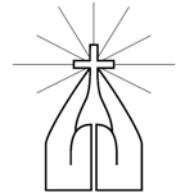
GENERAL: That the family may become more and more a place of training in charity, personal growth and transmission of the faith.



MISSION: That the different Christian confessions, aware of the need for a new evangelization in this period of profound transformations, may be committed to announcing the Good News and moving towards the full unity of all Christians in order to offer a more credible testimony of the Gospel.

Parish FAQ's

The Icon - Diversity in Unity





The icon for the clustered communities of Our Lad of Mount Carmel and Saint Thomas More Parishes reflects the child's game "here's the church, here's the steeple, open the doors and see all the people," which is done by interlocking your fingers and folding your hands.

In the icon, each parish is represented by a hand. As the parishes are clustered (but not merged), the two hands remain separated by a small space between them. Each hand, like each parish, retains its individual and unique identity.

The hands are also joined together in prayer and form an image of a church with a cross rising from the steeple. Each hand, like each parish, depends upon the bond of faith that unites us together in the one, holy, catholic, and apostolic Church.

A symbol of Christ, the cross of the icon is formed by both hands, united in prayer. It serves as a reminder that Christ is present wherever two or three gather in his name. In the unity of the faith, we share a diversity of gifts.



Terry Barney, Realtor
Cell: 500-3723


INTERSTATE
SECURITY
SYSTEMS
Free Estimates
502-348-2106
800-348-9106

Four-Week Calendar of Upcoming Events

CONFESSION

Saturday 4:30 p.m. (OLMC)

ROSARY RECITATION

Mon. - Sat. after 8:15 Mass (OLMC)

SATURDAY VIGIL MASS

5:30 p.m. (OLMC)

SUNDAY MASS




8:30 a.m. (OLMC)

10:30 a.m. (STM)

SCRIPTURE STUDY

Sunday, 9:30 a.m. (OLM)

Friday, 11:00 a.m. (STM)

	Week of Jan. 18 – Jan. 24	Week of Jan. 25 – Jan. 31	Week of Feb 1 – Feb 7	Week of Feb 8 – Feb 14
Sunday	9:30 a.m. (OLMC) Scripture Study 1:00 p.m. (STM) Gamblers Anonymous	9:30 a.m. (OLMC) Scripture Study 1:00 p.m. (STM) Gamblers Anonymous	Hospitality Sunday after 8:30 & 10:30 Masses 9:30 a.m. (OLMC) Scripture Study 1:00 p.m. (STM) Gamblers Anonymous	9:30 a.m. (OLMC) Scripture Study 10:30 & 12:20 p.m. (STM) Mass & 1st Eucharist Enroll. 1:00 p.m. (STM) Gamblers Anonymous
Monday	Parish Offices Closed 6:30 p.m. (OLMC) TOPS Meeting	6:30 p.m. (OLMC) TOPS Meeting	6:30 p.m. (OLMC) TOPS Meeting	11:00 a.m. (STM) STM Lunch Outing 12:30 p.m. (OLMC) Golden Citizens Potluck 6:30 p.m. (OLMC) TOPS Meeting
Tuesday	8:00 a.m.-2:00 p.m.. (SNA) Open House 9:30 a.m. (OLMC) Over 50 Group 10:00 a.m. (OLMC) Quilters 7:00 p.m. (STM) RCIA	9:30 a.m. (OLMC) Over 50 Group 10:00 a.m. (OLMC) Quilters 7:00 p.m. (STM) RCIA	9:30 a.m. (OLMC) Over 50 Group 10:00 a.m. (OLMC) Quilters 2:00 p.m. (STM) Altar Society 7:00 p.m. (STM) RCIA	9:30 a.m. (OLMC) Over 50 Group 10:00 a.m. (OLMC) Quilters 6:20, 7:00, 7:40 p.m. (STM) Parish Council Meetings 7:00 p.m. (STM) RCIA
Wednesday	7:00 p.m. (STM) Rel. Ed & Adult Faith 7:00 p.m. (OLMC) Knights of Columbus 7:00 p.m. (OLMC) K of C Ladies Auxiliary 7:00 p.m. (STM) Al-Anon 8:00 p.m. (STM) Alcoholics Anon.	7:00 p.m. (STM) Catechist Meeting 7:00 p.m. (STM) Al-Anon 8:00 p.m. (STM) Alcoholics Anon.	7:00 p.m. (STM) Rel. Ed & Adult Faith 7:00 p.m. (STM) Al-Anon 8:00 p.m. (STM) Alcoholics Anon.	7:00 p.m. (STM) Rel. Ed & Adult Faith 7:00 p.m. (STM) Al-Anon 8:00 p.m. (STM) Alcoholics Anon.
Thursday	12:30 p.m. (STM) Golden Age 6:30 p.m. (STM) Children's RCIA 7:00 p.m. (STM) Alcoholics Anonymous 7:30 p.m. (OLMC) Prayer Meeting	12:30 p.m. (STM) Golden Age 6:30 p.m. (STM) Children's RCIA 7:00 p.m. (STM) Alcoholics Anonymous 7:30 p.m. (OLMC) Prayer Meeting	12:30 p.m. (STM) Golden Age 6:30 p.m. (STM) Children's RCIA 7:00 p.m. (Cathedral) Confirmation 7:00 p.m. (STM) Alcoholics Anonymous 7:30 p.m. (OLMC) Prayer Meeting	12:30 p.m. (STM) Golden Age 6:30 p.m. (STM) Children's RCIA 7:00 p.m. (STM) Worship Committee Mtg. 7:00 p.m. (STM) Alcoholics Anonymous 7:30 p.m. (OLMC) Prayer Meeting
Friday	11:00 a.m. (STM) Scripture Study	11:00 a.m. (STM) Scripture Study	11:00 a.m. (STM) Scripture Study	11:00 a.m. (STM) Scripture Study
Saturday	12:00—4:00 p.m. (STM) K of C Free-throw Contest 		9:00 a.m. (OLMC) Hour Of Prayer 4:00 p.m. (OLMC) Holy Hour 5:30 p.m. (OLMC) Mass & 1st Eucharist E... 	"Happy Valentines Day" 3:00 p.m. (STM) Monthly Raffle Drawing 

Weekly Message:

En Theos — Enthusiasm For The Faith

Why do we begin the Sundays of ordinary time with a Gospel reading from John?

Ordinary time (numbered Sundays) begins when the Christmas season ends with the feast of the Baptism of the Lord and continues until Ash Wednesday. It picks up again after Pentecost.

Traditionally, the manifestations of Jesus to the world are encompassed in the epiphany mystery broadly understood. We often think of the epiphany as only being the visit of the magi, included as part of the Christmas story in Matthew. But the manifestation of the Son of God is also celebrated in the baptism at the Jordan. The account of changing water into wine at the wedding feast of Cana-Jesus' first "sign" as recorded in John's Gospel-is also celebrated as part of the epiphany mystery, manifesting Christ to the world.

With the reorganization of the liturgical calendar and the addition of a three-year cycle of readings we now have exposure to a greater portion of the Gospels. The Second Sunday in Ordinary Time continues the focus on the epiphany by proclaiming three different public manifestation accounts from John's Gospel. Reading from John's Gospel at the beginning or ordinary time extends the celebration of the epiphany beyond the visit of the magi to the initiation of Jesus' public ministry.

In Years A and B the passages focus on John the Baptist's role in pointing out Jesus to his disciples and to the world. Year C proclaims the wedding feast of Cana, Jesus' first openly public miracle as recorded in John's Gospel.

How do you publicly manifest Jesus in your life?

©2008 Liturgical Publications Inc, New Berlin, WI 53151

Treasures From Our Tradition

"Ordinary Time" began for us this week. On the old calendar, the feast of the Presentation, still more than two weeks away, was the last day of the Christmas season. Sadly, Bethlehem is hardly a place of peace on earth these days. The ancient Christian community has been largely uprooted by political strife. The Church of the Nativity stands (barely) in remarkable disrepair and disorder in Manger Square. The roof is crumbling, the major doorways are blocked, the wiring is faulty, and the worship life is disrupted by quarrels among Eastern Christians.



The church was founded by the Emperor Constantine in 325, destroyed in a Samaritan revolt in 539, and rebuilt by the Emperor Justinian. When the area came under Muslim control in 638, the holiness of the church was respected, and in return Christians allowed Muslims to pray in the south aisle, a right still upheld. Earlier in that century, invading Persians were ordered to destroy all churches, but when they saw the magi carved over the doorway of the Church of the Nativity, they spared it out of respect for their ancestors who bore gold, frankincense, and myrrh to the same city. The Crusaders restored and redecored the church by the twelfth century, and it is their plan that survives. Down a few stone steps is a stone grotto with a silver star marking the place of Christ's birth: when the star was stolen in 1847 it triggered an international crisis that exploded into the Crimean War.

Since 1852, the church has been shared by the Roman Catholic, Greek Orthodox, and Armenian Churches. The Greeks are in charge of the grotto, but don't enjoy the best of friendships with the Armenians. Catholics have the care of the Chapel of the Manger, and avoid the squabbles by a separate entrance to the Franciscan monastery church of St. Catherine. Pray for peace in Bethlehem!

—Rev. James Field, © Copyright, J. S. Paluch Co.

Wisdom

In today's fast paced world, it seems we are more concerned about speed than direction.

Do you focus on what is really important in life? Make sure your relationship with God is a top priority in your life.

The plans of the diligent lead surely to advantage, But everyone who is hasty comes surely to poverty.

Proverbs 21:5

Minister Schedule

Saturday, January 24, 5:30 p.m. Mass - OLMC

GREETERS Bradley Wegman, Lynn Wegman
 EUCH. MINISTERS Sharon Hudson, David Kellerman,
 Carolyn Kupper, Carol Mattingly,
 Sr. Marilyn Mueller, Bill Weaver
 LECTORS Statia Dodge, Mary Lee Lanning
 CANTOR Betty Mudd
 USHERS John Feuerborn, Bruce Hines,
 Terrance Nelson, Steve Wegman
 GIFT BEARERS Irene Denzik, Edward Niner
 SERVERS Robbie Baker, Jonathon Kelley

Sunday, January 25, 8:30 a.m. Mass - OLMC

GREETERS Brian Devine, Andrew Tinker
 EUCH. MINISTERS Alfred Bosemer, Lee Anne Devine,
 Helen Duncan, Joseph Hafner,
 Susan Johnson, Darleen Marr
 LECTORS Patrick Cooper, Anna McNear
 CANTOR Mary Beth Zinsius
 USHERS Doug Devine, Milton Hafner, Billy
 Johnson, Robert Krauth
 GIFT BEARERS Jeff Cooper, Sharon Krauth
 SERVERS Simon Devine, Doug Krauth

Sunday, January 25, 10:30 a.m. Mass - STM

GREETERS Teri Brown, Marge Hardin, Pam
 Hawkins, Sandra Pierce, Vickie
 Way
 EUCH. MINISTERS Pat Adkisson, Christie Atkinson,
 Angela Bell, Ron Bolton, Sr.,
 Nancy Coyne, Maureen Curran,
 Valerie Evans, Anna Gulick, Diane
 Hawkins, Carol Reinstedler, John
 Reinstedler, Aileen Spies, Beverly
 Stoller, Bonnie Tolbert
 LECTORS Nicole Crawford, Joe Mouser
 CANTOR Julia Lish
 USHERS Joshua Bell, Michael Bell, James
 Crawford, David Duffy, Joseph
 Duffy, Jerry Oechsli
 GIFT BEARERS David Borgelt, Annetta Richard
 SERVERS Hannah Bell, Rachael Rowe

Financial Stewardship of Jan 11, 2008

St. Thomas More Parish:

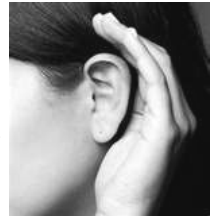
Last Week's Contributions	\$4,257.25
Weekly Budget	\$5,136.15
Year-To-Date Contributions	\$134,247.45
Year-To-Date Budget	\$144,964.87
Year-To-Date Gain or (Shortfall)	(\$10,717.42)

Our Lady of Mount Carmel:

Last Week's Contributions	\$7,458.07
Weekly Budget	\$9,615.39
Year-To-Date Contributions	\$245,479.09
Year-To-Date Budget	\$269,566.41
Year-To-Date Gain or (Shortfall)	(\$24,087.32)

VOCATION VIEW:

Speak Lord, your servant is listening.
 Listening to the Lord requires silence.
 Make time each day to be quiet, so that
 you can hear God's call.
 (1 Samuel 3:3-10)



ATLAS

SIDING, WINDOWS & MORE!

Visit our new 3,600 sq. ft. showroom at the
 corner of Palatka & Manslick Road
 (502) 363-8811 | www.atlaswindows.com

Call Chuck Story, Owner, for Parishioner Discounts

Our Many Hands

THE PARISH FINANCE COUNCILS

(canon 537; 3rd Thursday of the Month)

Rev. Philip Erickson, *Pastor*
 Mr. Carl Draper, *Business Manager*

OUR LADY OF MT. CARMEL

Bruce Hines
 Susan Johnson
 Joe Ratterman
 Mike Smith, *Chair*

SAINT THOMAS MORE

Marie Blumeier, *Chair*
 Linda Bohr
 Bruce Crawford
 Dan Saksefski

METRO

See us for Your
 Trophies - Jackets - T-Shirts
 4333 Taylor Blvd. 368-9391

Don't Just Pray for Business

Advertise for it here.
 Contact Cecilia May at 366-5651
 to find out how.



The Senior Connection

Domestic Violence Victims "Ride to Safety Program"

TARC and The Center for Women and Families have come together to provide a "Ride to Safety" program to women and children fleeing their homes due to domestic violence. This program appears to be the only one of its kind in the country.

"There is little more terrifying than facing a violent partner – knowing, as so many domestic violence victims do, that they have no means of transportation to escape". Now for domestic violence victims living in the Louisville area, the new program, "Ride to Safety" will provide transportation to The Center for Women and Families, a safe place. TARC bus drivers have been trained for this new program so when a woman boards the TARC bus, all she needs to do is say: "I need a ride to safety." Travel is free. The bus operator will radio TARC's Central Command Center to let the dispatcher know that there is a "ride to safety" request. A special TARC vehicle will then be dispatched to meet the bus. This new vehicle will then take the woman and her children to The Center for Women and Families.

Corissa Phillips, the Center's director of communication, said that the new program has two ingredients: "a shelter facility and a transit authority." "It costs next to nothing. It's just two organizations with different missions coming together and saying – we can help each other."

Although this article does not directly involve seniors, they are often a part of this situation since the "victims" could well be their children and grandchildren. When domestic violence occurs, the whole family is involved.



Saint Nicholas Academy is hosting an Open House on January 20th from 8:00 A.M. – 11:00 A.M. Come and experience an educational legacy that is founded in faith, embodied through service, committed to achievement, empowered by leadership and shared in our community. You are invited to enjoy our hospitality and share in the excitement of our vibrant school community. Please feel free to invite friends and neighbors to our Open House. Pre-registration for students new to Saint Nicholas will be held on January 20th from 10:00 A.M. – 6:00 P.M.

Stewardship Program

This month in our stewardship program at SNA, the 6th graders are focusing on the topic of babies, children and adolescents. In conjunction with this subject, we are working with the Pregnancy Resource Center. Teresa Watson, director of the center, came to speak to the students this past Monday. The Pregnancy Resource center is a nonprofit organization that has been offering free services that range from pregnancy testing to baby beds to prayers for all who come to the center. They are in need of restocking their baby closet. We will be collecting items from January 19th—30th. The 6th grade is asking for donations of the following items: baby wipes, formula, diaper rash ointment, diapers (sizes 2, 3, 4 and 5), baby lotion, baby shampoo and baby bottles.

Thank you,
Mrs. Fisch, Mrs. Oakes, and Mr. Davidson



Patricia Ratterman
Funeral Director

Arch L. Heady & Son
3601 Taylor Boulevard
Louisville, Kentucky 40215
(502) 368-5811 (502) 367-1637 (fax)
trish.ratterman@sci.us.com

Monthly Support to St. Nicholas Academy

	STM	OLMC
Support for December	\$4,407.00	\$9,267.00
Support year-to-date	\$26,442.00	\$55,602.00

St. Nicholas Academy

Sponsored by the Parishes of
MBS, OLMC, STM, SSJ

Ms. Carol Nord, Head of School

NORTH CAMPUS

Ms. Kathy Delozier
4335 Hazelwood Ave.
Louisville, KY 40215
502-368-8506, ext. 1

SOUTH CAMPUS

Ms. Kitty Schloemer
5501 New Cut Road
Louisville, KY 40214
502-368-8506, ext. 2

WE, THOUGH MANY, ARE ONE BODY IN CHRIST.

ROMANS 12-5

"When Samuel went to sleep in his place, the Lord came and revealed his presence, calling out, 'Samuel, Samuel!' Samuel answered, 'Speak, for your servant is listening.'" I Samuel 3:9-10

Today we hear Samuel respond eagerly, "Here I am! " each time the Lord calls him. A steward must be listening for the call of God in his/her life and be ready to respond like Samuel "Speak, for your servant is listening."

On With Life

A Catholic support group for the widowed, meets on the first Monday and third Tuesday of each month. The next meeting will be held on January 20th at 7:30 PM at St. Denis Parish, 4205 Cane Run Road. **Please note the new location: Brick House Behind Church!** For more information, call Family Ministries at (502) 636-0296

For Your Prayers

HOSPITALIZED

Our Lady of Mount Carmel
Iris Marlin, Judith Patterson
St. Thomas More Parish
Maudell Hopkins



NURSING HOMES

Our Lady of Mount Carmel
Ann Crabb, Alice Hagan, William & Juanita McKinney, Carolyn Schneider.
St. Thomas More Parish
Cecilia Ballard, Dot Biven, Leo Biven, Virginia Burckel, Margaret Cissell, Gayle Crook, Betty Farnsley, Mary Fowler, Al Hettich, Agnes Howard, Fr. Anthony Howard, Carolyn Kennedy, Lucy Maguire, Mary Randol, Francis Sermersheim

HOMEBOUND

Our Lady of Mount Carmel
Don Bowman, Millie & Harry Dickman, Lois Jarvis, Mary Mader, Sherrill Neutz, Judy & Bill Patterson, Kevin Rudolph and J.Cowan Stone
St. Thomas More Parish
Viola Baker, Ballard Family, Lavoy Crutcher, Anna Downs, Frankie Edlin, Carolyn Kennedy, Vivian Manuel.

DOUG JONES HOME IMPROVEMENT CO. *All Work Guaranteed Free Estimates*

DAVID JONES Replacement Windows
7004 VENETIAN WAY Vinyl Siding
LOUISVILLE, KY 40214 Porch Enclosures
366-0291 Vinyl Decking

RECOVERING AT HOME

Our Lady of Mount Carmel

Martha Taylor

St. Thomas More Parish

Marcie Atkinson, James Ballard, Leo Ballard, Philip Ballard, Bob Bennett, Brenda Bolton, Mary M. Casto, Angie Crabtree, Dawn Friedrich, Becky Highbaugh, Terry Highbaugh, Velma Howard, Helen Klein, Pauline Lyle, Charlie McCullium, Debbie Sale, Leanne Spayd, Steven Spayd, Denny Thomas, Leisa Baker -Tucker, Ann Marie Verwest, Katie VonSick, Ann Wicker, Steven Williams, Aileen Woerner, Denise Wood, Richard Yates & Lorie Crutcher-Young.

Please notify the office if you know someone who needs to be on or ***OFF*** our lists.

*Feed your faith
And your doubts will starve to death.
~E. C. McKenzie~*

~~~~~

*The Greeks have given us one of the  
most beautiful words of our language,  
the word "Enthusiasm," a God within.  
The grandeur of the acts of humans  
is measured by the inspiration  
from which they spring.*

*Happy is the person who bears a God within.  
~ Louis Pasteur~*

~~~~~

For those of you who would like to order Catholic books, religious items or cards, you may want to check out the following web sites:

www.abbeypress.com: www.avemariapress.com

Please remember in your prayers all those who suffer with illness of mind, body or spirit.

EnviroSafe

"Protecting your World"
Termite & Pest Control

(502) 425-8110
P.O.Box 9401 • Louisville, KY 40209

ANEAR SERVICES, INC.

Electrical
Heating - Air Conditioning

Pat Myers, Parishioner
589-1326 Cell: 553-0459

Coming Together in Faith

Notes From Tom Morton:

Confirmation Retreat: Monday, 9:00 AM -3:00 PM at Most Blessed Sacrament. Please pray for these great eighth graders as they prepare to be Confirmed by Archbishop Kurtz on February 5th, 2009.

Wednesday Evenings 7:00—8:15 PM

Join us as we continue our study of St Paul: "Paul in Prison" will tell of his conversion and missionary activity around the Mediterranean. St Thomas More Church, 7:00 PM. Paul will be here in person.

Southend Men's Retreat -

Led by Art Turner, will be held Saturday, **February 21st from 9:00 AM—5:00 PM** (We will end with a 4:00 PM Mass) at Flaget Center (off Dixie, next to St Lawrence). The Fee is \$10 (includes lunch). Sign up by Feb.1st in Church or Call Tom Morton at 366-1463 or email southendcatholic@hotmail.com Bring a friend.

Wednesday Afternoon Adult Session:

Pot Luck, January 28th, 11:00 AM -1:00 PM STM Cafeteria. Come learn about how our diocese began. An early Catholic Pioneer, Papa Tom, will recount the beginnings of the Church in Kentucky.

Seven Steps To Being Financially Free.

Keep watching here. We'll have an information session the end of the month.

Book Club:

We have a book club forming...Call to sign up.

Small Groups,

Book Clubs, Prayer Groups— we're here to help you form a group and get it going.

Mardi Gras: We're going to have a blowout of a Mardi Gras Celebration, Tuesday, February 24. Need help with set up, pot luck, clean up, Musicians (any drummers out there?), parade leaders – call to get involved. Sign-up in the back of church.

WEBSITE OF THE WEEK:

Here's another where you can find out more about the year of St Paul <http://www.spirituality.org>

You can contact Tom at the Religious Formation Center by calling 366-1463 or e-mail SouthendCatholic@hotmail.com

Father Philip Extends His Thanks...

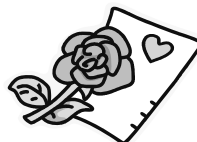
to everyone for donating to the Right to Life Ad campaign. There were 105 names signed for the ad and \$649.00 was donated.

A Note From Deacon Mike:

We need your help. Many of those in need come to us for help, especially to feed their families. The STM Project Hope food pantry is extremely low on stock at this time. We are in need of donations of soups, pastas, rice, cereals, peanut butter, canned meats & fish, milk, fruits, vegetables, paper products, and bar soap. Any donation you can make will be graciously accepted. You can put your donations in the basket at the rear of STM church before Mass. Thank you once again for your abundant generosity!

Don't Know What To Do With Those Greeting Cards?? Before You Toss Or Recycle.....

consider helping us help the St. Jude's Ranch for children. They accept all types of greeting card fronts (without writing on them). They are trimmed to fit a 5X7 inch card back and are attached to a new blank card. The recycled cards are then sold, with all proceeds going directly back to the abused, abandoned and neglected children at the 3 ranches. We will have boxes in the back of both churches for collection of card fronts through **February 15th**. They will be picked up by Dawn Duffy after 12:30 PM Mass that day and she will ship them to :



St. Jude's Ranch For Children
100 St. Jude's St.
Boulder City, NV 89005-1681

You can visit their website for more information.

SENN'S

COLLISION REPAIR CENTERS

Body & Paint Shops Since 1949

13010 Middletown Ind. Blvd. 4505 Poplar Level Rd. 3700 Cane Run Rd.
254-2481 966-2226 778-5578

Ask about our Church rebate!

Johnson's

QUALITY CHILD CARE

JOHNSON'S AFTERSCHOOL

JOHNSON'S DAY CARE 5533 BRUCE AVE. 361-7832	PROGRAM AT OUR LADY OF MT. CARMEL 7333 SOUTHSIDE DR. 361-7832	JOHNSON'S 2 CHILD CARE 8010 OLD 3RD ST. RD. 368-6800
--	--	---

Proud Enough To Put Our Name On

SUSAN JOHNSON

Eucharistic Ministry Training

STM and OLMC will offer training for Eucharistic Ministers on Thursday, **January 22, at 7:00 PM at STM** in the church. This is for **all Eucharistic Ministers of BOTH parishes:**

- Who's 5-year mandate from the Archdiocese has expired or is about to expire,
- New ministers who have not yet received a mandate
- Anyone who is interested in becoming a Eucharistic Minister.

Opposition To The Freedom Of Choice Act

At this time of serious national challenges, Americans should unite to serve the good of all, born and unborn. The Freedom of Choice Act (FOCA), the most radical and divisive pro-abortion bill ever introduced in Congress, would create a "fundamental right" to abortion that government could not limit but would have to support. FOCA would overturn many existing widely-supported policies, including laws protecting parental involvement and conscience rights and those preventing partial-birth abortion and taxpayer funding of abortion.

Our parishes will participate in a campaign next weekend, January 24-25, 2009 to collect signed postcards from parishioners at church to inform legislators about our opposition to the Freedom of Choice Act. Please be sure to fill one out!!

Please oppose FOCA or any similar measure, and retain laws against federal funding and promotion of abortion.



Notes From Our Knights

We have the following events coming up for the remainder of January.:

Wednesday January 21st - Monthly meeting held at 7:00 at Our Lady of Mount Carmel

Saturday January 24th - Free Throw Contest for all children ages 10-14 from 12:00 PM - 4:00 PM at St. Thomas More's Gym. Trophies will be awarded to each top winning boy and girl of every age group. To register to participate please call Bob Baker at 968-0985. It's FREE!! Come join the fun!!

Sunday January 25th - Clergy Appreciation Dinner to be held at 3:00 at St. Martha Church, Bethany center 2825 Klondike Lane

We invite everyone to visit our new website : <http://www.mckunecouncil.org>

Information For Our Parish Nurses:

The Norton Healthcare Office of Church and Health Ministries is holding a workshop titled *Blood Pressure Update: Taking Healthy Measures Against Hypertension* on Saturday, Jan. 31, 2009. The workshop for health care professionals will review blood pressure assessment and medications to treat hypertension. Continental breakfast will be available at 8:30 a.m. and the program will be from 9 a.m. to noon at Norton Audubon Hospital. To register or for more information, call (502) 629-1234. Two contact hours are available for nurses.

The Cathedral of the Assumption...

is honored to host the 15th annual Thomas Merton Birthday Celebration, Thurs., January 29 at 7:00 pm in the Cathedral Undercroft. Held in January close to Merton's birthday, the evening acknowledges and celebrates the life and works of this great contemplative monk. Several performers will read original material written by Rev. George Kilcourse, Professor of Theology at Bellarmine University and Merton Scholar, entitled *Thomas Merton: Spirituality of Global Healing*. You are invited to join in for this enjoyable evening in honor of Merton. The program is free of charge and open to all. For more information, call the parish office at (502) 582-2971.

WESSEL INSURANCE
4101 Cane Run Road
448-1625
Theresa Wessel Young

JACC'S
Vacuum Repair and
Janitorial Supplies
502/690-3565
830 Brookline Avenue
40215

Goben Chiropractic Offices

P.L.L.C.

Kevin L. Goben, D.C.

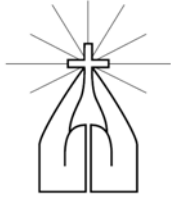
700 Gagel Avenue
Louisville, KY 40216

502-366-7386
Fax 502-366-2222



7330 Southside Drive
361-7112

www.ratterman.com



*Many Hands.
One Faith.*

Our Lady of Mount Carmel
5505 New Cut Road
Louisville, KY 40214
502-366-5651
502-368-9972 FAX
www.OLMC-Louisville.com

St. Thomas More Parish
6105 South Third Street
Louisville, KY 40214
502-366-1463
FAX 502-366-1464

Bulletin Deadline: Tuesday, 3:00 p.m.

Contact Information

Life and Death Emergencies 502-435-4216
Parish Life Center (STM) 502-363-3719 ext 28

PASTOR

Rev. Philip L. Erickson, JCL
(frplae@saint-thomas-more.org)

PASTOR EMERITUS (STM)

Rev. J. Wayne Murphy
(c/o bcrask@saint-thomas-more.org)

PERMANENT DEACONS

Deacon Mike Tolbert
(deaconmiketolbert@msn.com)
Deacon Terry Maguire
(tdr13@insightbb.com)

PASTORAL ASSOCIATE

Ms. Pat Finck
(pfinck@insightbb.com)

DIRECTOR OF RELIGIOUS EDUCATION AND FORMATION

Mr. Tom Morton
(southendcatholic@hotmail.com)

DIRECTOR OF WORSHIP

Mr. Chris Tolbert
(christolbert@insightbb.com)

BUSINESS MANAGER

Mr. Carl A. Draper
(c.draper@insightbb.com)

PARISH SECRETARIES

Ms. Benida Crask (STM)
(benidacrask@msn.com)
Cecilia May (OLMC)
(parishsecretary@insightbb.com)

BULLETIN COORDINATOR

Ms. Julie Robertson
(julierobertsonstm@hotmail.com)



Sacraments

Baptism (preparation required)

MONTHLY INFANT BAPTISM

1st Sunday of the month during Mass (Fr.)
2nd Sunday of the month after Mass (Deacon)

ANNUAL ADULT BAPTISM

Through RICA at the Easter Vigil

Confirmation (preparation required)

Annual celebration

Eucharist

Saturday Vigil	5:30 p.m.	OLMC
Sunday	8:30 a.m.	OLMC
	10:30 a.m.	STM
	12:30 p.m.	STM

Holy Days	8:15 a.m.	OLMC
	Noon	STM
	7:00 p.m.	STM

Weekday (Mon-Sat)	8:15 a.m.	OLMC
-------------------	-----------	------

Exposition & Benediction	4:00-5:00 p.m.	OLMC
1st Saturday of the Month		

Penance (confession)

Saturday, 4:30 p.m., or by appointment (OLMC)

Anointing of the Sick

Available twice a year or by request

Marriage

Minimum 6-month preparation with priest or deacon

Holy Orders

DIACONATE	Deacon Robert Hall 502-636-0296 diaconate@archlou.org
-----------	---

PRIESTHOOD	Rev. Bill Bowling 502-636-0296 vocation@archlou.org
------------	---

Fairdale Florist & Gift Shop

In the  of Fairdale

10700 W Manslick Rd.

367-8523

Let us help you find the
perfect gift for any occasion.

Now owned by OLMC Parishioner